












## Excess deaths from all causes and by COVID-19 in Brazil in 2020

Alcione Miranda dos Santos<sup>I</sup> , Bruno Feres de Souza<sup>II</sup> , Carolina Abreu de Carvalho<sup>I</sup> , Marcos Adriano Garcia Campos<sup>I</sup> , Bruno Luciano Carneiro Alves de Oliveira<sup>I</sup> , Eduardo Moraes Diniz<sup>III</sup> , Maria dos Remédios Freitas Carvalho Branco<sup>I</sup> , Rejane Christine de Sousa Queiroz<sup>I</sup> , Vitória Abreu de Carvalho<sup>I</sup> , Waleska Regina Machado Araújo<sup>IV</sup> , Antônio Augusto Moura da Silva<sup>I</sup> 

<sup>I</sup> Universidade Federal do Maranhão. Programa de Pós-Graduação em Saúde Coletiva. São Luís, MA, Brasil

<sup>II</sup> Universidade Federal do Maranhão. Departamento de Engenharia da Computação. São Luís, MA, Brasil

<sup>III</sup> Universidade Federal do Maranhão. Departamento de Física. São Luís, MA, Brasil

<sup>IV</sup> Universidade de São Paulo. Faculdade de Medicina. Departamento de Medicina Preventiva, São Paulo, SP, Brasil

### ABSTRACT

**OBJECTIVE:** To estimate the 2020 all-cause and COVID-19 excess mortality according to sex, age, race/color, and state, and to compare mortality rates by selected causes with that of the five previous years in Brazil.

**METHODS:** Data from the Mortality Information System were used. Expected deaths for 2020 were estimated from 2015 to 2019 data using a negative binomial log-linear model.

**RESULTS:** Excess deaths in Brazil in 2020 amounted to 13.7%, and the ratio of excess deaths to COVID-19 deaths was 0.90. Reductions in deaths from cardiovascular diseases (CVD), respiratory diseases, and external causes, and an increase in ill-defined causes were all noted. Excess deaths were also found to be heterogeneous, being higher in the Northern, Center-Western, and Northeastern states. In some states, the number of COVID-19 deaths was lower than that of excess deaths, whereas the opposite occurred in others. Moreover, excess deaths were higher in men aged 20 to 59, and in black, yellow, or indigenous individuals. Meanwhile, excess mortality was lower in women, in individuals aged 80 years or older, and in whites. Additionally, deaths among those aged 0 to 19 were 7.2% lower than expected, with reduction in mortality from respiratory diseases and external causes. There was also a drop in mortality due to external causes in men and in those aged 20 to 39 years. Moreover, reductions in deaths from CVD and neoplasms were noted in some states and groups.

**CONCLUSION:** There is evidence of underreporting of COVID-19 deaths and of the possible impact of restrictive measures in the reduction of deaths from external causes and respiratory diseases. The impacts of COVID-19 on mortality were heterogeneous among the states and groups, revealing that regional, demographic, socioeconomic, and racial differences expose individuals in distinct ways to the risk of death from both COVID-19 and other causes.

**DESCRIPTORS:** Neoplasms, mortality. Mortality. COVID-19. Cause of Death.

#### Correspondence:

Antônio Augusto Moura da Silva  
Departamento de Saúde Pública  
Rua Barão de Itapary, 155 Centro  
65020-070 São Luís, MA, Brasil  
E-mail: aamouradasilva@gmail.com

Received: Aug 16, 2021

Approved: Aug 19, 2021

**How to cite:** Santos AM, Souza BF, Carvalho CA, Campos MAG, Oliveira BLA, Diniz EM, et al. Excess deaths from all causes and by covid-19 in Brazil in 2020. Rev Saude Publica. 2021;55:71. <https://doi.org/10.11606/s1518-8787.2021055004137>

**Copyright:** This is an open-access article distributed under the terms of the Creative Commons Attribution License, which permits unrestricted use, distribution, and reproduction in any medium, provided that the original author and source are credited.



## INTRODUCTION

Given the low RT-PCR (Reverse Transcription Polymerase Chain Reaction) for COVID-19 testing rate in Brazil, it is possible that some of the recorded COVID-19 deaths might have been due to other causes. Moreover, the restrictive measures adopted to control the pandemic may have caused variations in other causes of death. Excess deaths from all causes have been one of the most useful measures to assess the direct impact of COVID-19 on mortality. Additionally, it also assesses the indirect impact caused by reduced health services access in patients with other co-morbidities and the impact of restrictive measures adopted to fight the pandemic<sup>1,2</sup>.

Worldwide, Brazil is the second country with the highest number of COVID-19 deaths<sup>3</sup>. In the year 2020, 194,976 COVID-19 deaths were registered in the country, and by August 10, 2021, they totaled 564,773 deaths<sup>4</sup>. Despite the high number of recorded deaths, it is likely that there is still underreporting of deaths caused by COVID-19. Among the main causes was the uncertainty of COVID-19 diagnosis in the first months of 2020, as it was a new disease and healthcare professionals had limited experience to certify these deaths<sup>5,6</sup>. Moreover, most COVID-19 deaths occurred among the elderly, who commonly present with multiple co-morbidities, consequently increasing the difficulty in identifying the basic cause of mortality<sup>4</sup>. Another factor that may have contributed to the underreporting was the collapse of the healthcare network, as reported in some states<sup>7</sup>. Thus, it was likely that people who died outside health services would have a more flawed notification of the cause of death<sup>8</sup>.

Karlinsky and Kobak<sup>9</sup> (2021) evaluated the excess mortality of 89 countries, observing that Peru had the highest annual excess mortality (146%). In this study, Brazil was in 7th place, with an excess mortality of 33% as of April 2021. It was also observed that the ratio between excess mortality and COVID-19 mortality differed among countries. Specifically, most of them presented ratio of above 1, suggesting underreporting of COVID-19 deaths, which was the case in Egypt (13.1), Russia (4.8), and Mexico (2.2). However, some countries, such as Belgium (0.6) and France (0.7), had ratios lower than 1, indicating that there were more COVID-19 deaths than excess deaths<sup>9</sup>. This probably occurred since the other causes of death, including deaths from influenza and external causes, decreased as a result of the distancing measures adopted to control the pandemic<sup>9,10</sup>.

In Brazil, there are two mortality registration systems, both of which use the death declaration (DO) as the basic document. The Civil Registry (CR) is a registry-based system, whose information is compiled and disseminated by the Brazilian Institute of Geography and Statistics (IBGE), whereas the Mortality Information System (SIM) is based on the Ministry of Health. Underreporting of deaths has been reported to be low in both systems, with the SIM showing a lower rate than the CR. Notably, IBGE estimates showed that underreporting was 1.48% for the SIM and 4.00% for the CR in 2018, wherein the SIM ranged from 0.29% in DF to 5.65% in AP<sup>11</sup>.

In Brazil, Silva et al.<sup>12</sup> (2020) analyzed the excess mortality from March to May 2020, observing 39,146 more deaths than expected for this period. Moreover, the highest recorded excess mortality was found in the capitals of the North, Northeast, and Southeast regions. Werneck et al.<sup>13</sup> (2021), on the other hand, analyzed the excess mortality in Brazil from April 2020 to March 2021, reporting 305,000 more deaths than expected. Furthermore, the results of this study showed that excess of deaths varied among Brazilian states, with the highest percentage in Amazonas (84%) and the lowest in Piauí (11%). Although both studies used data from the National Civil Registry Information Center, they only included natural causes, limiting the observation of the full impact of COVID-19 on mortality. This was because both studies did not capture the reductions that may have occurred in deaths from external causes, which was a result of reduced mobility during the pandemic<sup>9,14</sup>.

Given these findings, the objectives of this study were: (1) to estimate the 2020 excess mortality from all causes and by COVID-19 in Brazil, according to sex, age, race/color, and

state, based on the SIM data; and (2) to compare the mortality rates by selected causes in 2020 to the median rates of the years 2015 to 2019 according to state, sex, age, and race/color. To the best of our knowledge, there has been no published work in Brazil that used the SIM to calculate excess deaths, which included external causes and stratified excess mortality by sex, age, and race/color, or that has explored the variation of cause-specific mortality rates.

## METHODS

In this study, all individual records regarding non-fetal deaths based on place of residence from 2015 to 2020 available in the SIM were included, which was obtained from the website [opendatasus.saude.gov.br](http://opendatasus.saude.gov.br) and was accessed last August 4, 2021. Deaths considered for 2020 corresponded to all deaths that occurred in the period from December 29, 2019, to January 2, 2021 (epidemiological weeks 1 to 53). The SIM records for 2020 were still considered preliminary, and the last update was made on August 3, 2021.

Information on the date of death, basic cause of death, age (in complete years), sex, race/color, and the municipality code of the residence of the deceased were obtained. Deaths with no information (unknown) regarding sex ( $n = 3,708$ ), age ( $n = 16,854$ ), and race/color ( $n = 261,955$ ) were excluded in the specific analyses for these variables. The education variable was not included, because more than 20% of the values were missing.

Considering the International Classification of Diseases (ICD: 10) the causes were classified as the following: COVID-19 (code B34.2), other infectious diseases, neoplasms, cardiovascular diseases, respiratory diseases, ill-defined causes, external causes, and others. Deaths were analyzed by epidemiological week and stratified according to sex (male and female), age groups (0–19, 20–39, 40–59, 60–79, and  $\geq 80$  years), race/color (white, black, brown and others), and state. Individuals of yellow and indigenous race/color were aggregated in others, due to the small number of deaths in each category.

Data regarding the population of Brazil were obtained from the IBGE, with estimates collected for each state, sex and age group in each year<sup>15</sup>. To estimate the Brazilian population by race/color in 2020, we used the median proportions of each category in the quarterly continuous national surveys taken via household sampling conducted over the past six years<sup>16</sup> and multiplied them by the Brazilian population of each year.

### Statistical Analysis

Initially, the identification of aberrations, which are significant changes in the series including natural disasters and epidemics, was performed. For this, the procedure proposed by Farrington et al.<sup>17</sup> (1996) was used, wherein the series of deaths from 2010 to 2014 was used as reference, and the series from 2015 to 2020 for monitoring. Although excess mortality from Chikungunya and influenza were detected in some states in 2016, these viruses had little influence on the estimates of expected deaths for 2020 and were, therefore, disregarded. More details regarding this procedure are described in the supplementary material available on: [https://github.com/aamouradasilva/excess\\_mortality/blob/main/supplementary-material.pdf](https://github.com/aamouradasilva/excess_mortality/blob/main/supplementary-material.pdf).

To obtain the number of expected deaths for 2020, the population was stratified by age group, sex, race/skin color, and state. For each group, a generalized linear model was adjusted to estimate the number of expected deaths in 2020 from the series of deaths recorded from 2015 to 2019. The number of deaths in epidemiological week  $t$  ( $t = 1, \dots, 52$ ) denoted by  $y_t$ , assuming that  $y_t$  followed a negative binomial distribution, with mean  $\mu_{0,t}$  and fixed dispersion parameter  $\alpha$ , was estimated using the model described in Serfling<sup>18</sup> (1963), in which  $\mu_{0,t}$  was modeled by:

$$\log(\mu_{0,t}) = \beta_0 + \beta_1 \cdot t + \beta_2 \cos\left(\frac{2\pi}{52} \cdot t\right) + \beta_3 \sin\left(\frac{2\pi}{52} \cdot t\right) + \beta_4 \cdot pop_t \quad (1).$$

wherein  $\log$  represents the natural logarithm,  $\beta_0$  the intercept,  $\beta_i$  ( $i = 1, \dots, 4$ ) the regressor parameters estimated by the model, and  $pop_t$  the population size in year  $t$ . For model fitting, the R surveillance package was used<sup>19</sup>. Furthermore, the number of deaths expected for week 52 was assumed for week 53.

Absolute excess deaths were obtained by subtracting the number of observed deaths from the number of expected deaths in each epidemiological week for each state, sex, age group, and race/color. Both weeks with excess and deficit of deaths were considered. The percentage of excess deaths was obtained by dividing the number of excess deaths by the number of expected deaths multiplied by 100. The ratio between excess deaths and the number of COVID-19 deaths was also calculated.

Following, the 2020 mortality rates by selected causes were compared with the median of these rates for the years 2015 to 2019.

All analyses in this study were performed in the R software (version 4.1.0) and RStudio (version 1.4.1717). The scripts and the supplementary material can be accessed at the following website: [https://github.com/aamouradasilva/excess\\_mortality.git](https://github.com/aamouradasilva/excess_mortality.git).

### Ethical Aspects

Since this study used public and unidentified secondary data, approval from the Ethics Committee on Research in Human Beings was waived (Resolution no. 510/2016 of the National Health Council).

## RESULTS

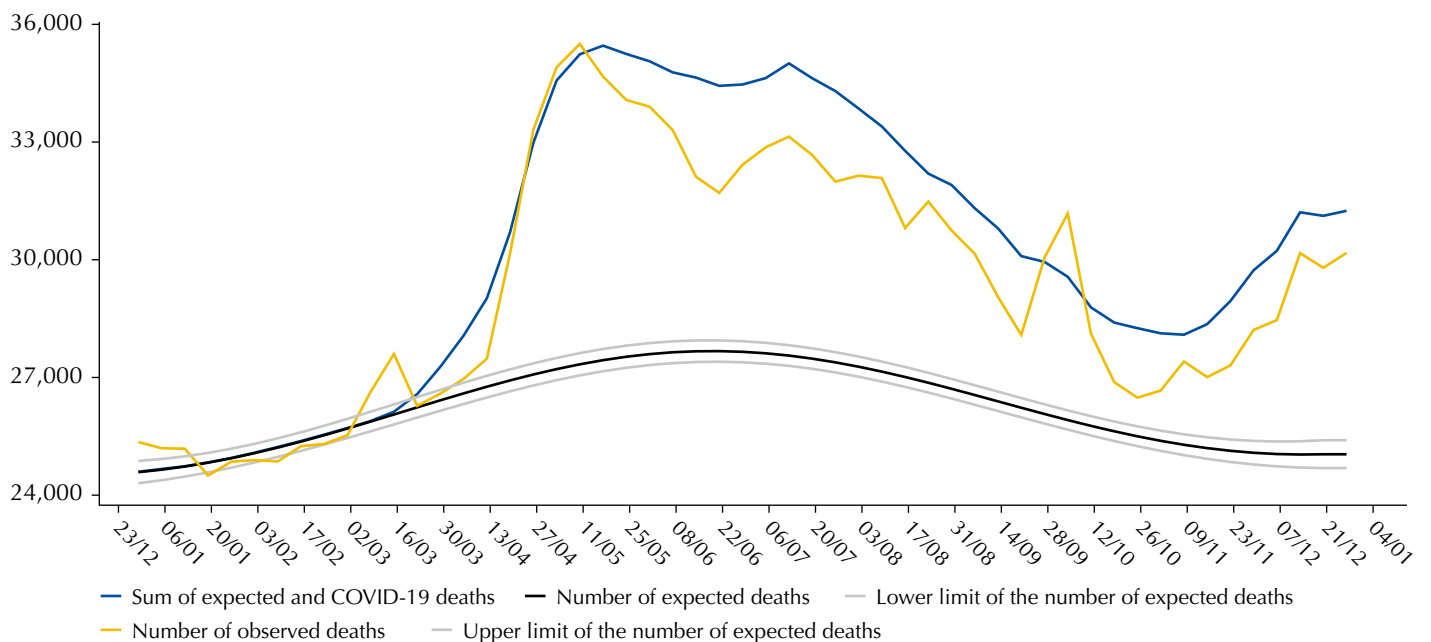
In 2020, 1,551,673 deaths were registered in the SIM, which was 13.7% more than what was expected. Among these deaths, the number of COVID-19 deaths (208,518) was higher than excess deaths (187,070), resulting in a ratio of excess deaths to COVID-19 deaths of 0.90 (Table 1). Notably, excess mortality began in March and April, peaked in May, decreased until September, and increased again from October onwards. Until the beginning of May, excess deaths from COVID-19 (representing the distance between the sum of expected and COVID-19 deaths and the number of expected deaths) coincided with excess deaths from all causes. However, starting from the end of May, deaths from COVID-19 surpassed excess deaths from all causes (Figure 1). When comparing mortality rates by selected causes in 2020 with the median of these rates from 2015 to 2019, reductions in deaths caused by cardiovascular diseases, respiratory diseases, external causes, and increases in mortality from ill-defined causes, were all noted (Figure 2).

The Brazilian states presented variations in the proportional excess deaths, with the biggest percentages occurring in Northern states, especially AM (34.6%), AP (23.8%), and PA (23.6%), and Center-Western states, particularly DF (27.6%) and MT (24.4%). On the other hand, the percentage of excess deaths was smaller in Southern states, with prominence in RS (3.3%), MG (6.5%), and also in PI (8.5%). In most states, the ratio between excess deaths and COVID-19 deaths was lower than 1, especially in RS (0.33), SC (0.41), RR (0.51), and PI (0.66). However, in other states, this ratio was higher than 1, as seen in MA (1.51), PE (1.28), and PA (1.27) (Table 1). Excess all-cause deaths and excess COVID-19 deaths by epidemiological week and state are presented by geographical region in Supplementary Figures (SF) 1 to 5. In AM, PA (SF 1), MA, and PE (SF 2), COVID-19 deaths were below excess deaths during the epidemic peak. In other states, such as MG, SP (SF 3), SC, and RS (SF 4), the opposite was true.

The comparison of mortality rates in 2020 by selected causes with the median of these rates from 2015 to 2019 by epidemiological week and state are found in SF 8 to 34. In AM (SF 10), PA (SF 12), and MA (SF 15), the peak in COVID-19 deaths coincided with the peaks in deaths from cardiovascular, respiratory, ill-defined, and other causes. In other states,

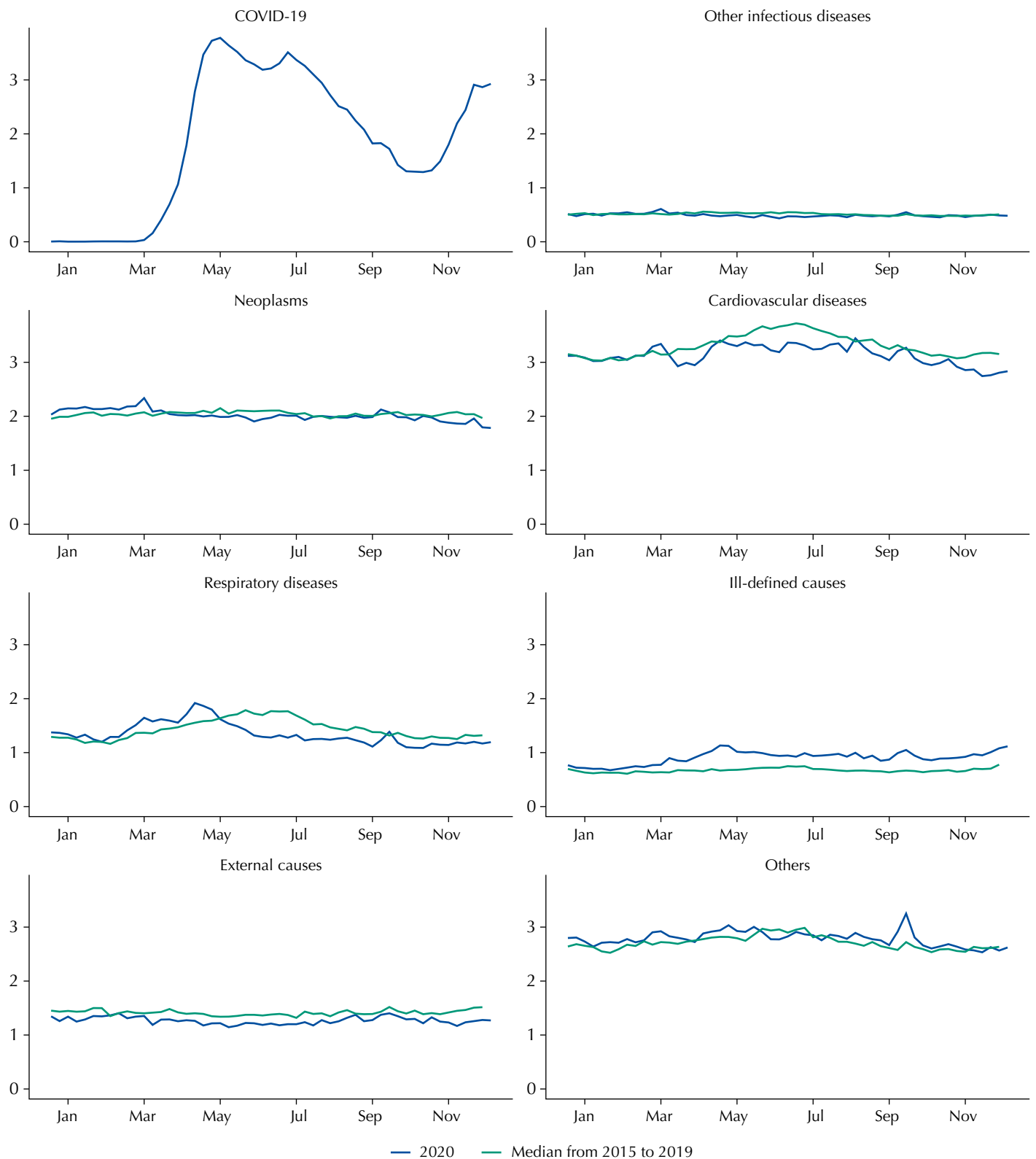
**Table 1.** Excess deaths due to all causes and deaths from COVID-19 by state in Brazil, 2020.

State	Expected deaths	Observed deaths	Excess deaths (n)	Excess deaths (%)	Deaths from COVID-19 (n)	Ratio of excess deaths to COVID-19 deaths
RO	8,380	10,295	1,915	22.9	1,907	1.00
AC	4,313	4,895	582	13.5	813	0.72
AM	18,574	24,997	6,423	34.6	5,478	1.17
RR	3,106	3,515	409	13.2	803	0.51
PA	42,048	51,982	9,934	23.6	7,796	1.27
AP	3,679	4,553	874	23.8	1,106	0.79
TO	8,263	9,221	958	11.6	1,245	0.77
MA	35,556	43,303	7,747	21.8	5,124	1.51
PI	21,514	23,353	1,839	8.5	2,796	0.66
CE	58,570	69,201	10,631	18.2	11,828	0.90
RN	22,078	24,480	2,402	10.9	3,077	0.78
PB	27,379	30,852	3,473	12.7	3,424	1.01
PE	63,602	77,159	13,557	21.3	10,624	1.28
AL	20,050	24,159	4,109	20.5	3,492	1.18
SE	13,251	15,919	2,668	20.1	2,169	1.23
BA	93,854	104,420	10,566	11.3	10,524	1.00
MG	141,695	150,962	9,267	6.5	13,418	0.69
ES	24,852	28,953	4,101	16.5	4,703	0.87
RJ	146,253	170,522	24,269	16.6	30,324	0.80
SP	308,807	351,814	43,007	13.9	48,178	0.89
PR	75,237	81,771	6,534	8.7	8,466	0.77
SC	43,261	45,246	1,985	4.6	4,857	0.41
RS	90,237	93,181	2,944	3.3	8,791	0.33
MS	17,135	19,169	2,034	11.9	2,219	0.92
MT	18,779	23,356	4,577	24.4	4,292	1.07
GO	41,265	48,045	6,780	16.4	7,766	0.87
DF	12,816	16,350	3,534	27.6	3,298	1.07
Brazil	1,364,603	1,551,673	187,070	13.7	208,518	0.90



Excess deaths are the distance between the number of observed and the number of expected deaths.  
 Excess deaths by COVID-19 are the distance between the sum of expected and COVID-19 deaths and the number of expected deaths.

**Figure 1.** Excess deaths due to all causes and to COVID-19 by epidemiological week (dd/mm), Brazil, 2020



**Figure 2.** Mortality rate (per 100,000) by epidemiological week according to selected causes, Brazil, 2015 to 2020.

such as MG (SF 24), RJ (SF 26), and RS (SF 30), reductions in deaths from cardiovascular diseases, respiratory diseases, and external causes were evident in 2020 compared to the five previous years. Moreover, in other states, it was possible to observe reductions in deaths from cardiovascular and respiratory diseases, such as SP (SF 27), and PR (SF 28). Furthermore, certain states, such as PE (SF 20), BA (SF 23), RJ (SF 26), SP (SF 27), RS (SF 30), MS (SF 31), MT (SF 34), and DF (SF 35) showed an increase in mortality from ill-defined causes.



The percentage of excess deaths was higher in males (15.7%) than in females (11.3%). For both sexes, the ratio between excess deaths from all causes and COVID-19 deaths was lower than 1, which was more markedly observed in females (SF 6). Moreover, reductions in mortality rates from cardiovascular and respiratory diseases in 2020, comparing with the five previous years and an increase in mortality rate due to ill-defined causes, were observed in both sexes. In males, there was also a reduction in deaths from external causes (SF 35 and 36).

The 40–59 age group had the highest proportional excess deaths (19.3%), followed by the groups aged 20–39 years (17.6%) and 60–79 years (17.3%). Meanwhile, the lowest percentage of excess deaths was observed in the age group  $\geq 80$  years (10.1%). In the 0–19 age group, the number of observed deaths was lower than expected, resulting to a mortality deficit of -7.2% (Table 2), which occurred from March onwards and coincided with the time of the first COVID-19 deaths. In the 20–39 age group, the number of these deaths were below excess deaths during the entire period, whereas in the 40–59 age group, COVID-19 deaths coincided with excess deaths. In the last two age groups, 60–79 and  $\geq 80$  years, the number of COVID-19 deaths exceeded excess deaths (Figure 3). Furthermore, mortality rates due to respiratory, external causes, and other causes in 2020 were well below the rates from 2015 to 2019 among those under 20 years of age (SF 37). In the 20–39 age group, there was a sharp drop in mortality from external causes and a slight increase in mortality from ill-defined causes (SF 38). In the 40–59 age group, there was a fall in deaths from neoplasms, cardiovascular diseases, and external causes, and an increase of mortality from ill-defined causes (SF 39). Lastly, in the age groups  $\geq 60$  years old, reductions in deaths from neoplasms, cardiovascular diseases, respiratory diseases, and an increase in mortality from ill-defined causes, were all noted (SF 40 and 41).

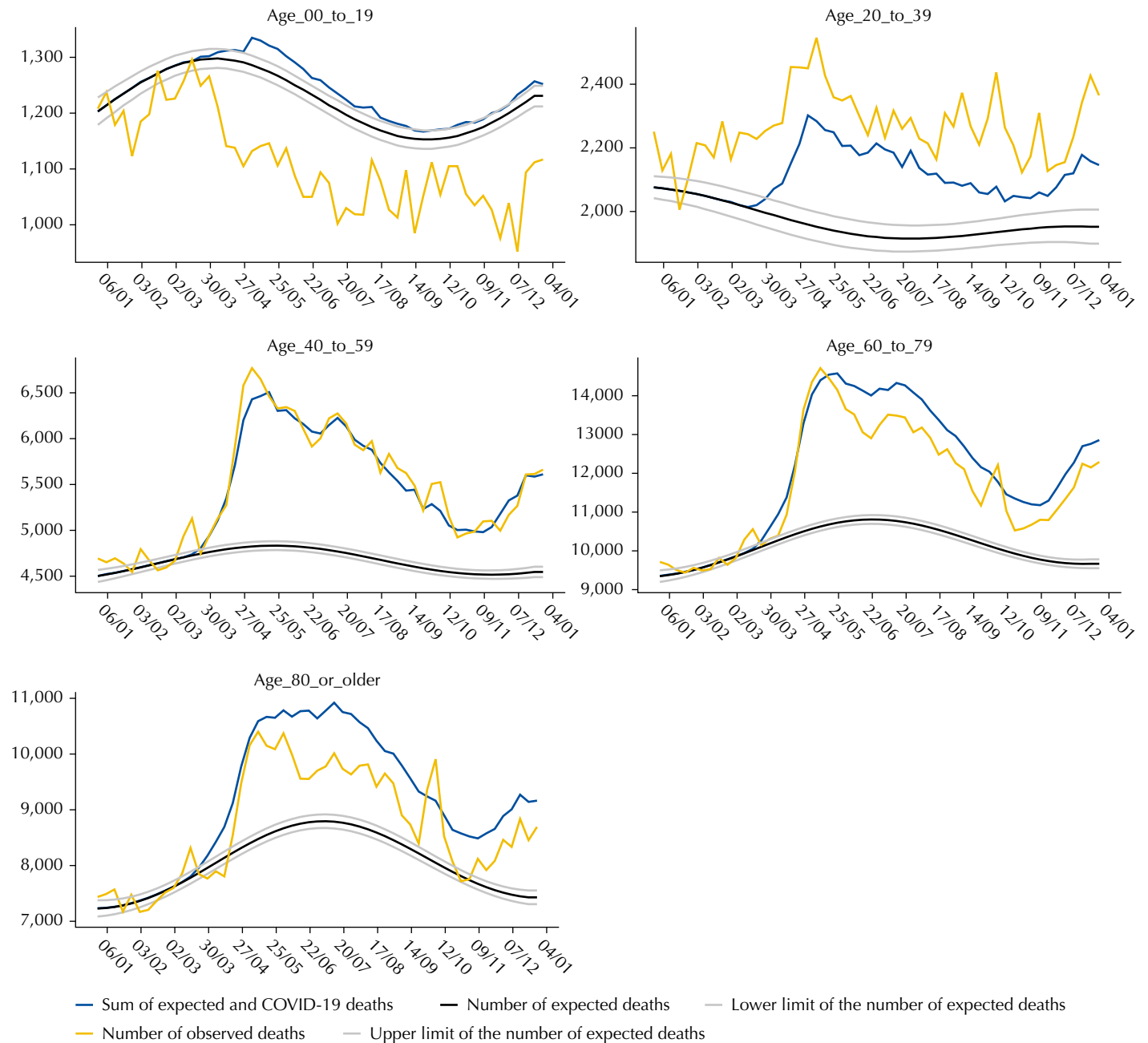
Regarding race/color, the highest proportional excess mortality occurred in other races/colors (yellow and indigenous, 22.0%) and in blacks (18.9%). Brown individuals had an intermediate percentage (14.6%) of excess deaths, whereas whites had the lowest proportional excess deaths (10.2%) (Table 2). Among brown subjects and more intensely among whites, the number of COVID-19 deaths surpassed excess deaths, whereas in blacks and other races/colors, these numbers were almost coincident (SF 7). Notably, in whites, there was a drop in deaths from neoplasms, cardiovascular diseases, respiratory diseases, external causes, and an increase in deaths from ill-defined causes (SF 42). Furthermore, in

**Table 2.** Excess deaths due to all causes and deaths from COVID-19 by sex, age group and race/skin color in Brazil, 2020.

Variable	Expected deaths	Observed deaths	Excess deaths (n)	Excess deaths (%)	Deaths from COVID-19 (n)	Ratio of excess deaths to COVID-19 deaths
Sex						
Male	752,451	870,431	117,980	15.7	119,309	0.99
Female	611,671	680,593	68,922	11.3	89,197	0.77
Age group						
0 to 19	63,628	59,016	- 4,612	-7.2	1,006	<sup>a</sup>
20 to 39	102,251	120,238	17,987	17.6	7,743	2.32
40 to 59	242,597	289,529	46,932	19.3	39,403	1.19
60 to 79	528,174	619,456	91,282	17.3	101,776	0.90
$\geq 80$	418,733	461,060	42,327	10.1	58,567	0.72
Race/Color						
White	692,066	762,959	70,893	10.2	101,441	0.70
Black	110,258	131,110	20,852	18.9	18,192	1.15
Brown	524,683	601,482	76,799	14.6	79,739	0.96
Others <sup>b</sup>	12,077	14,735	2,658	22.0	2,396	1.11

<sup>a</sup> Ratio not estimated because excess deaths were negative, that is, there was a deficit of deaths.

<sup>b</sup> Include race/color yellow and indigenous.



Excess deaths are the distance between the number of observed and the number of expected deaths.  
Excess deaths by COVID-19 are the distance between the sum of expected and COVID-19 deaths and the number of expected deaths.

**Figure 3.** Excess deaths by all causes and by COVID-19 by epidemiological week (dd/mm), according to age, Brazil, 2020.

the black and brown race groups, an increase in deaths from ill-defined causes and other causes were observed, besides showing a slight decrease in mortality due to external causes (SF 43 and 44).

## DISCUSSION

The estimates presented in this study indicated a 13.6% excess mortality from all causes in Brazil in 2020. The number of COVID-19 deaths was higher than excess deaths, resulting in a ratio of excess deaths to COVID-19 deaths of 0.90, which suggested that there was a reduction in some causes of death. This was asserted by the findings of decreases in mortality rates from cardiovascular diseases, respiratory diseases, and external causes, compared to the previous five years.



The data from our study suggest the occurrence of underreporting of COVID-19 deaths, as described in other articles<sup>6,7,20,21</sup>. In several Brazilian states, there was an increase in mortality rate from ill-defined causes. Particularly, in MA, PA, and AM, the peak of COVID-19 mortality coincided with the peaks of mortality from cardiovascular, respiratory, and ill-defined diseases. Moreover, in some states, the number of COVID-19 deaths was lower than excess deaths, resulting in a ratio of excess deaths to COVID-19 deaths greater than 1.

Patterns of excess deaths were heterogeneous among the Brazilian states. Excess deaths were notably higher in Northern, Center-Western, and Northeastern states, especially in AM, DF, and MT, indicating a more intense pandemic impact in these states in 2020. Meanwhile, the percentage of excess deaths was lower in Southern and Southeastern states, especially in RS, SC, and MG. These states tended to have ratios of excess deaths to COVID-19 deaths lower than 1, suggesting a decrease in deaths from other causes. This was quite evident in RS, which had a deficit of deaths in the second quarter of the year, suggesting that non-pharmacological measures were probably responsible for the observed reduction in deaths from external causes and other respiratory diseases, such as influenza, and for the delay in the peak of COVID-19<sup>22</sup>. Furthermore, the lower excess deaths in the Southern and Southeastern states may reflect the greater purchasing power of the population in these areas, which would greatly enhance their social distancing practices, including remote home work<sup>23</sup>.

Higher excess deaths were reported among males in the age group 20-59 years and of black, yellow, or indigenous race/color, suggesting that, in Brazil, these groups were more vulnerable and had lesser chances of protecting themselves from contamination. For indigenous communities, this finding may be due to historical inequalities in access to health services and sanitary conditions, as well as a higher prevalence of malnutrition, infections, and chronic diseases<sup>24</sup>. For black and brown individuals, the higher excess deaths may have resulted from an increased exposure to COVID-19 associated with greater use of public transportation and insertion in informal and essential jobs requiring physical presence by these groups<sup>25,26</sup>.

A lower percentage of excess deaths was reported among women aged 80 years or more and in whites, suggesting that they were able to protect themselves more from COVID-19, with a greater adherence to social isolation and other non-pharmacological measures<sup>27</sup>. The ratio between excess deaths and COVID-19 deaths was less than 1 in these groups, wherein mortality rates from cardiovascular and respiratory diseases were reduced. Lower excess deaths in women can be explained by their lower insertion in the labor market, greater health care, greater adherence to the use of masks, and having fewer comorbidities associated with the aggravation of COVID-19 than men<sup>28</sup>. Regarding the lower percentage in whites, this was possibly attributed to the fact that they are wealthy and more likely to be employed in higher skilled occupations with a greater possibility of remote work<sup>27</sup>. Similarly, the elderly, many of whom are retired, were more likely to remain in social isolation and, thus, safer from COVID-19<sup>29</sup>.

There was a deficit of deaths in those under 20 years of age, which was explained by a lower COVID-19 mortality<sup>30</sup> and large reduction in deaths from respiratory diseases and external causes in this age group. This reduction in deaths from these causes was also observed in other countries in 2020 among individuals below 15 years of age<sup>31</sup>. This deficit has been attributed to a combination of factors, such as children and adolescents spending more time at home with the suspension of face-to-face learning<sup>32</sup>. Another reason was that the restricted mobility caused by the quarantine measures likely led to a reduction in unintentional (drowning and car accidents) and intentional injuries (homicides)<sup>14,33,34</sup> and deaths from influenza<sup>10</sup>.

Interestingly, mortality from external causes in 2020 was lower in those younger than 20 years of age and in males. This was most likely due to the effect of social distancing in Brazil, which reduced firearm and stabbing injuries during the pandemic<sup>35</sup>, besides a drop of approximately 22% in deaths related to traffic accidents in São Paulo<sup>36</sup>.

In Southern and Southeastern states, such as MG, RS, RJ, SP, and PR, a reduction in the mortality rates for cardiovascular diseases and neoplasms were observed in those  $\geq 40$  years of age and in whites. Reasons for this reduction have yet to be studied, but it may be related to the substitution of causes of death<sup>37</sup>. Furthermore, individuals at a higher risk of death from cardiovascular diseases and neoplasms may have died earlier from COVID-19, since these patients would present with a worse prognosis upon contracting COVID-19<sup>38</sup>.

Despite the findings of this study, certain limitations were noted, such as SIM data for the year 2020, which were preliminary and may not represent all deaths that occurred in the period, as it is subject to corrections, especially in the underlying cause of death. However, these changes in data are expected to be minimal in the future since most of 2020 deaths have already been recorded.

Nevertheless, we emphasize some strengths in this study. First, the use of the SIM database made it possible to process detailed information on the basic cause of death and perform analysis by place of residence. Another strong point was the inclusion of deaths from external causes, which allowed the identification of an accentuated drop in violent deaths among men, those under 19 years of age, and those between 20 and 39 years of age.

In conclusion, the impacts of COVID-19 on mortality were heterogeneous among Brazilian states and in sex, age, and race/color groups, and modified the mortality structure in 2020 relative to the previous five years. These different impacts of COVID-19 on mortality in certain states and groups revealed geographic, demographic, socioeconomic, and racial inequalities that expose individuals in different ways to the risk of infection and mortality from COVID-19 or other causes. Furthermore, the underreporting of COVID-19 deaths and the increase of mortality from ill-defined causes reflect the shortcomings of the death surveillance system, reinforcing the need for greater funding and strengthening of this system in Brazil.

## REFERENCES

1. Adair T, Lopez AD, Hudson S. Approaches and methods for estimating excess deaths due to COVID-19. CRVS best-practice and advocacy. Melbourne (AU): Bloomberg Philanthropies Data for Health Initiative, Civil Registration and Vital Statistics Improvement, University of Melbourne; 2020.
2. Marinho F, Torrens A, Teixeira R, França E, Nogales AM, Xavier D, et al. Excess mortality in Brazil: detailed description of trends in mortality during the COVID-19 pandemic. New York: Vital Strategies; 2020 [cited 2021 Jul 21]. Available from: <https://www.vitalstrategies.org/resources/excess-mortality-in-brazil-a-detailed-description-of-trends-in-mortality-during-the-covid-19-pandemic/>
3. Johns Hopkins University School of Medicine. Mortality analyses: cases and mortality by country. Baltimore, MD: Coronavirus Resource Center; 2021 [cited 2021 Jul 21]. Available from: <https://coronavirus.jhu.edu/data/mortality>
4. Ministério da Saúde (BR). Painel Coronavírus: óbitos confirmados. Brasília, DF; 2021 [cited 2021 Aug 10]. Available from: <https://covid.saude.gov.br/>
5. França EB, Ishitani LH, Teixeira RA, Abreu DMX, Corrêa PRL, Marinho F, et al. Óbitos por COVID-19 no Brasil: quantos e quais estamos identificando? *Rev Bras Epidemiol.* 2020;23:1-7. <https://doi.org/10.1590/1980-549720200053>
6. Prado MF, Antunes BBP, Bastos LSL, Peres IT, Silva AAB, Dantas LF, et al. Analysis of COVID-19 under-reporting in Brazil. *Rev Bras Ter Intens.* 2020;32(2):224-8. <https://doi.org/10.5935/0103-507X.20200030>
7. Orellana JDY, Cunha GM, Marrero L, Moreira RI, Leite IC, Horta BL. Excesso de mortes durante a pandemia de COVID-19: subnotificação e desigualdades regionais no Brasil. *Cad Saude Publica.* 2021;37(1):e00259120. <https://doi.org/10.1590/0102-311x00259120>
8. Orellana JDY, Marrero L, Horta BL. Excesso de mortes por causas respiratórias em oito metrópoles brasileiras durante os seis primeiros meses da pandemia de COVID-19. *Cad Saude Publica.* 2021;37(5):e00328720. <https://doi.org/10.1590/0102-311x00328720>

9. Karlinsky A, Kobak D. The World Mortality Dataset: tracking excess mortality across countries during the COVID-19 pandemic. medRxiv [Preprint]. 2021. <https://doi.org/10.1101/2021.01.27.21250604>
10. Hills T, Kearns N, Kearns C, Beasley R. Influenza control during the COVID-19 pandemic. *Lancet*. 2020;396(10263):1633-4. [https://doi.org/10.1016/S0140-6736\(20\)32166-8](https://doi.org/10.1016/S0140-6736(20)32166-8)
11. Instituto Brasileiro de Geografia e Estatística. Sistema de Estatísticas Vitais. Estimativa do Sub-registro de Óbitos. Rio de Janeiro: IBGE; 2019 [cited 2021 Jul 16]. Available from: <https://www.ibge.gov.br/estatisticas/sociais/populacao/26176-estimativa-do-sub-registro.html?=&t=resultados>
12. Silva GA, Jardim BC, Santos CVB. Excesso de mortalidade no Brasil em tempos de COVID-19. *Cienc Saude Coletiva*. 2020;25(9):3345-54. <https://doi.org/10.1590/1413-81232020259.23642020>
13. Werneck GL, Bahia L, Moreira JPL, Scheffer M. Mortes evitáveis por Covid-19 no Brasil. São Paulo: Oxfam Brasil; 2021 [cited 2021 Jul 16]. Available from: <https://www.oxfam.org.br/especiais/mortes-evitaveis-por-covid-19-no-brasil/>
14. Calderon-Anyosa RJC, Kaufman JS. Impact of COVID-19 lockdown policy on homicide, suicide, and motor vehicle deaths in Peru. *Prev Med (Baltim)*. 2021;143:106331. <https://doi.org/10.1016/j.ypmed.2020.106331>
15. Instituto Brasileiro de Geografia e Estatística. Projeções da População: Tabelas: Projeções da População do Brasil e Unidades da Federação por sexo e idade: 2010-2060. Rio de Janeiro: IBGE; 2020 [cited 2021 Jul 16]. Available from: <https://www.ibge.gov.br/estatisticas/sociais/populacao/9109-projecao-da-populacao.html?=&t=resultados>
16. Instituto Brasileiro de Geografia e Estatística. Pesquisa Nacional por Amostra de Domicílios Contínua Trimestral: Tabela 6403 - População por cor ou raça. Rio de Janeiro: Sidra -IBGE; 2021 [cited 2021 16 Jul]. Available from: <https://sidra.ibge.gov.br/tabela/6403>
17. Farrington CP, Andrews NJ, Beale AD, Catchpole MA. A statistical algorithm for the early detection of outbreaks of infectious disease. *J R Stat Soc Ser A Stat Soc*. 1996;159(3):547-63. <https://doi.org/10.2307/2983331>
18. Serfling RE. Methods for current statistical analysis of excess pneumonia-influenza deaths. *Public Health Rep*. 1963;78(6):494-506.
19. Salmon M, Schumacher D, Höhle M. Monitoring count time series in R: aberration detection in public health surveillance. *J Stat Softw*. 2016;70(10):1-35. <https://doi.org/10.18637/jss.v070.i10>
20. Carvalho TA, Boschiero MN, Marson FAL. COVID-19 in Brazil: 150,000 deaths and the Brazilian underreporting. *Diagn Microbiol Infect Dis*. 2021;99(3):115258. <https://doi.org/10.1016/j.diagmicrobio.2020.115258>
21. Kupek E. How many more? Under-reporting of the COVID-19 deaths in Brazil in 2020 [Early View]. *Trop Med Int Health*. 2021;10.1111/tmi.13628. <https://doi.org/10.1111/tmi.13628> Epub ahead of print
22. Barros AJD, Victora CG, Menezes AMB, Horta BL, Hartwig F, Victora G, et al. Social distancing patterns in nine municipalities of Rio Grande do Sul, Brazil: the Epicovid19/RS study. *Rev Saude Publica*. 2020;54:75. <https://doi.org/10.11606/s1518-8787.2020054002810>
23. Silva LLS, Lima AFR, Polli DA, Razia PFS, Pavão LFA, Cavalcanti MAFH, et al. Medidas de distanciamento social para o enfrentamento da COVID-19 no Brasil: caracterização e análise epidemiológica por estado. *Cad Saude Publica*. 2020;36(9):e00185020. <https://doi.org/10.1590/0102-311x00185020>
24. Meneses-Navarro S, Freyermuth-Enciso MG, Pelcastre-Villafuerte BE, Campos-Navarro R, Meléndez-Navarro DM, Gómez-Flores-Ramos L. The challenges facing indigenous communities in Latin America as they confront the COVID-19 pandemic. *Int J Equity Health*. 2020;19(1):63. <https://doi.org/10.1186/s12939-020-01178-4>
25. Horta BL, Silveira MF, Barros AJD, Barros FC, Hartwig F, Dias M, et al. Prevalence of antibodies against SARS-CoV-2 according to socioeconomic and ethnic status in a nationwide Brazilian survey. *Rev Panam Salud Publica*. 2020;44:1-7. <https://doi.org/10.26633/RPSP.2020.135>
26. Oliveira RG, Cunha AP, Gadelha AGS, Carpio CG, Oliveira RB, Corrêa RM. Desigualdades raciais e a morte como horizonte: considerações sobre a COVID-19 e o racismo estrutural. *Cad Saude Publica*. 2020;36(9):e00150120. <https://doi.org/10.1590/0102-311x00150120>
27. Szwarcwald CL, Souza Júnior PRB, Malta DC, Barros MBA, Magalhães MAFM, Xavier DR, et al. Adesão às medidas de restrição de contato físico e disseminação da COVID-19 no Brasil. *Epidemiol Serv Saude*. 2020;29(5):e2020432. <https://doi.org/10.1590/s1679-49742020000500018>

28. Bienvenu LA, Noonan J, Wang X, Peter K. Higher mortality of COVID-19 in males: sex differences in immune response and cardiovascular comorbidities. *Cardiovasc Res*. 2020;116(14):2197-206. <https://doi.org/10.1093/cvr/cvaa284>
29. Romero DE, Muzy J, Damacena GN, Souza NA, Almeida WS, Szwarcwald CL, et al. Idosos no contexto da pandemia da COVID-19 no Brasil: efeitos nas condições de saúde, renda e trabalho. *Cad Saude Publica*. 2021;37(3):e00216620. <https://doi.org/10.1590/0102-311x00216620>
30. Bhopal SS, Bagaria J, Olabi B, Bhopal R. Children and young people remain at low risk of COVID-19 mortality. *Lancet Child Adolesc Health*. 2021;5(5):e12-3. [https://doi.org/10.1016/S2352-4642\(21\)00066-3](https://doi.org/10.1016/S2352-4642(21)00066-3)
31. Islam N, Shkolnikov VM, Acosta RJ, Klimkin I, Kawachi I, Irizarry RA, et al. Excess deaths associated with covid-19 pandemic in 2020: age and sex disaggregated time series analysis in 29 high income countries. *BMJ*. 2021;373:n1137. <https://doi.org/10.1136/bmj.n1137>
32. Almeida WS, Szwarcwald CL, Malta DC, Barros MBA, Souza Júnior PRB, Azevedo LO, et al. Mudanças nas condições socioeconômicas e de saúde dos brasileiros durante a pandemia de COVID-19. *Rev Bras Epidemiol*. 2020;23:E200105. <https://doi.org/10.1590/1980-549720200105>
33. Son JY, Fong KC, Heo S, Kim H, Lim CC, Bell ML. Reductions in mortality resulting from reduced air pollution levels due to COVID-19 mitigation measures. *Sci Total Environ*. 2020;744:141012. <https://doi.org/10.1016/j.scitotenv.2020.141012>
34. Leão MLP, Penteadó JO, Ulguim SM, Gabriel RR, Santos M, Brum AN, et al. Health impact assessment of air pollutants during the COVID-19 pandemic in a Brazilian metropolis. *Environ Sci Pollut Res Int*. 2021;28(31):41843-50. <https://doi.org/10.1007/s11356-021-13650-x>
35. Ribeiro-Junior MAF, Néder PR, Augusto SS, Elias YGB, Hluchan K, Santo-Rosa OM. Current state of trauma and violence in São Paulo - Brazil during the COVID-19 pandemic. *Rev Col Bras Cir*. 2021;48:e20202875. <https://doi.org/10.1590/0100-6991e-20202875>
36. Bocchini B. Quarentena reduz em 47% número de mortes de idosos no trânsito de SP. Brasília, DF: Agência Brasil; 2020 [cited 2021 Jul 25]. Available from: <https://agenciabrasil.ebc.com.br/geral/noticia/2020-07/quarentena-reduz-47-o-numero-de-mortes-de-idosos-no-transito-de-sp>
37. Jardim B, Migowski A, Corrêa FM, Silva GA. Covid-19 no Brasil em 2020: impacto nas mortes por câncer e doenças cardiovasculares [SciELO Preprint]. 2021 [posted 2021 Jul 20]. <https://doi.org/10.1590/SCIELOPREPRINTS.2659>
38. Nandy K, Salunke A, Pathak SK, Pandey A, Doctor C, Puj K, et al. Coronavirus disease (COVID-19): a systematic review and meta-analysis to evaluate the impact of various comorbidities on serious events. *Diabetes Metab Syndr Clin Res Rev*. 2020;14(5):1017-25. <https://doi.org/10.1016/j.dsx.2020.06.064>

---

**Funding:** Funded by the call MCTIC/CNPq/FNDCT/MS/SCTIE/Decit No. 07/2020 - Research to address COVID-19, its consequences and other severe acute respiratory syndromes; Grant term: 401734/2020-0. Funded by FAPEMA n.06/2020 - Support for research on facing the COVID-19 pandemic and post-pandemic; Grant term: 003299/2020. Funded by CAPES (Coordination for the Improvement of Higher Education Personnel) [finance code No: 001]. Funded by CNPq (National Council for Scientific and Technological Development) for the research productivity grants: Process: 306592/2018-5.

**Authors' Contribution:** Study design and planning, data collection, data analysis and interpretation, preparation and writing of the manuscript, critical review of the manuscript and final approval: AMS, BFS, CAC, MAGC, BLAO, EMD, MDRFCB, RCSQ, VAC, WRMA and AAMS.

**Conflict of Interest:** The authors declare no conflict of interest.